

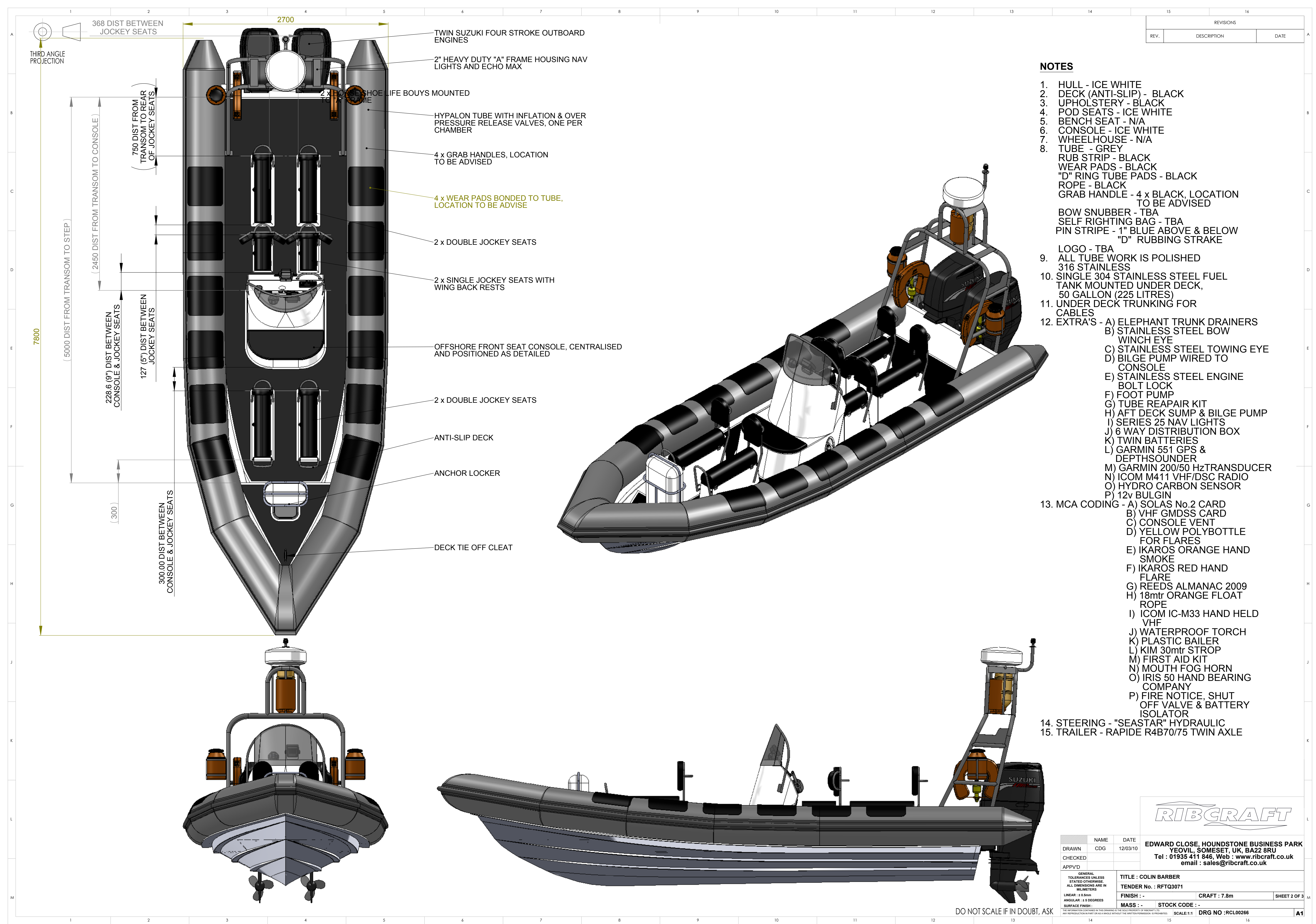
REVISIONS		
REV.	DESCRIPTION	DATE
1	FIRST ISSUE	25/05/2010

NOTES

1. HULL - ICE WHITE
2. DECK (ANTI-SLIP) - BLACK
3. UPHOLSTERY - BLACK
4. POD SEATS - ICE WHITE
5. BENCH SEAT - N/A
6. CONSOLE - ICE WHITE
7. WHEELHOUSE - N/A
8. TUBE - GREY
9. RUB STRIP - BLACK
10. WEAR PADS - BLACK
11. "D" RING TUBE PADS - BLACK
12. ROPE - BLACK
13. GRAB HANDLE - 4 x BLACK, LOCATION
TO BE ADVISED
14. BOW SNUBBER - TBA
15. SELF RIGHTING BAG - TBA
16. PIN STRIPE - 1" BLUE ABOVE & BELOW
"D" RUBBING STRAKE
17. LOGO - TBA
18. 9. ALL TUBE WORK IS POLISHED
316 STAINLESS
19. 10. SINGLE 304 STAINLESS STEEL FUEL
TANK MOUNTED UNDER DECK,
50 GALLON (225 LITRES)
20. 11. UNDER DECK TRUNKING FOR
CABLES
21. 12. EXTRA'S - A) ELEPHANT TRUNK DRAINERS
B) STAINLESS STEEL BOW
WINCH EYE
C) STAINLESS STEEL TOWING EYE
D) BILGE PUMP WIRED TO
CONSOLE
E) STAINLESS STEEL ENGINE
BOLT LOCK
F) FOOT PUMP
G) TUBE REPAIR KIT
H) AFT DECK SUMP & BILGE PUMP
I) SERIES 25 NAV LIGHTS
J) 6 WAY DISTRIBUTION BOX
K) TWIN BATTERIES
L) GARMIN 551 GPS &
DEPTH SOUNDER
M) GARMIN 200/50 Hz TRANSDUCER
N) ICOM M411 VHF/DSC RADIO
O) HYDRO CARBON SENSOR
P) 12v BULGIN
22. 13. MCA CODING - A) SOLAS No.2 CARD
B) VHF GMDSS CARD
C) CONSOLE VENT
D) YELLOW POLYBOTTLE
FOR FLARES
E) IKAROS ORANGE HAND
SMOKE
F) IKAROS RED HAND
FLARE
G) REEDS ALMANAC 2009
H) 18mtr ORANGE FLOAT
ROPE
I) ICOM IC-M33 HAND HELD
VHF
J) WATERPROOF TORCH
K) PLASTIC BAILER
L) KIM 30mtr STROP
M) FIRST AID KIT
N) MOUTH FOG HORN
O) IRIS 50 HAND BEARING
COMPANY
P) FIRE NOTICE, SHUT
OFF VALVE & BATTERY
ISOLATOR
23. 14. STEERING - "SEASTAR" HYDRAULIC
24. 15. TRAILER - RAPIDE R4B70/75 TWIN AXLE

	NAME	DATE	EDWARD CLOSE, HOUNDSTONE BUSINESS PARK YEOVIL, SOMESÉT, UK, BA22 8RU Tel : 01935 411 846, Web : www.ribcraft.co.uk email : sales@ribcraft.co.uk		
DRAWN	CDG	12/03/10			
CHECKED					
APP'VD					
GENERAL TOLERANCES UNLESS STATED OTHERWISE ALL DIMENSIONS ARE IN MILLIMETERS LINEAR : ± 0.5mm ANGULAR : ± 5 DEGREES SURFACE FINISH :			TITLE : COLIN BARBER TENDER No. : RFTQ3071 FINISH : - CRAFT : 7.8m SCALE : 1:1 DWG No. : RCL00266		
THE INFORMATION CONTAINED IN THIS DRAWING IS THE SOLE PROPERTY OF RIB CRAFT LTD. ANY REPRODUCTION IN PART OR AS A WHOLE WITHOUT THE WRITTEN PERMISSION IS PROHIBITED.			A1		

DO NOT SCALE IF IN DOUBT, ASK



DO NOT SCALE IF IN DOUBT, ASK

